

RIVNUT® aero

High strength self locking blind rivet nut

BÖLLHOFF





RIVNUT® aero - High strength, self locking blind rivet nut for blind installation

Function

- Provides a high strength thread within carbon and/or aluminium plates
- Prevents unscrewing
- Provides a universal approach thanks to an all-in-one installation kit

Technical characteristics

- Body made of AISI 316L stainless : ensures corrosion strength and perfect mechanical characteristics
- Wire thread insert : prevents thread disengagement due to its screw locking function and imparts maximum mechanical performance on the joint
- Silver-plated thread : prevents binding

Advantages

General approach

Installation is a key factor (kits = insert + installation procedures + support preparation).

Two elements in one

Blind rivet nut for consistent and reliable installation providing visible installation integrity.

Wire thread insert provides effective and durable screw locking, high thread wear resistance, as well as excellent resistance to vibration and thermal shock.

Maximum operating range

Up to 2.5 mm so as to minimise the part numbers used.

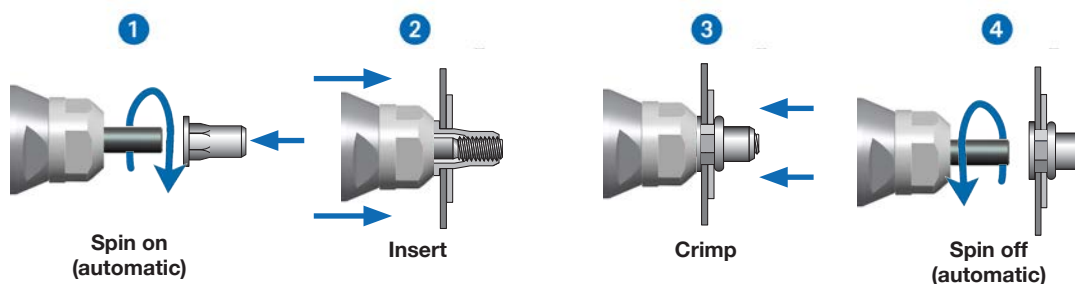
Usable for aerospace and ISO applications

Thanks to its characteristics the same insert can be used for aerospace (MJ) or ISO (M) section bolts. High resistant bolts (1.200 to 1.400 N/mm²) can be used which ensure that the bolt remains the weakest element in the assembly (easier and cheaper to replace).

Repair

Repairs of HELICOIL® allow to use again RIVNUT® aero without damage of the braking function. Solution repair is available on request.

Quick and easy installation procedure



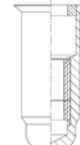
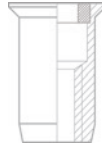
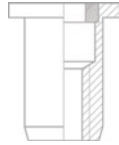
RIVNUT® aero - High strength, self locking blind rivet nut for blind installation

Standard design

**Flate head
RIVKLE® aero**

**Countersink head
RIVKLE® aero**

**Blind
RIVKLE® aero**



Code	d (mm)	l (mm)	B (mm)	Head	E (mm)	Installation	e (min - max) (mm)	+0.1/0 (mm)	(N / 15 s)				
233 98 040 714	M(J) 4	17.0	9.0	Flat	1.0	Open	1.0 - 3.3	7.0	10 700				
233 98 050 723		18.4	13.0				1.75 - 3.75						
233 98 050 721		19.0					3.75 - 5.75						
233 98 050 722	M(J) 5	21.1	11.3	Countersink 100°	1.1	Closed	1.75 - 3.75	9.0	17 300				
233 98 050 725		23.0					1.75 - 3.75						
233 98 050 727		23.1					5.75 - 7.75						
233 98 050 728*		18.0					13.0			Flat	0.6	Open	0.8 - 3.3
233 98 050 732		20.5											3.3 - 5.3
233 98 050 733	25.1	11.3	Countersink 100°	1.1	Closed	3.75 - 5.75							
233 98 060 734	M(J) 6	20.1	14.0	Flat	1.5	Open	1.2 - 2.8	10.0	25 000				
233 98 060 735		21.7					2.25 - 4.3						
233 98 060 733		21.2					4.3 - 6.3						
233 98 060 745		23.8					6.3 - 8.3						
233 98 060 746		25.9					8.3 - 10.3						
233 98 060 747	28.0												
233 98 697 503*	UN(J)F 10/32	18.5	11.3	Countersink 100°	1.1	Open	1.75 - 3.75	9.0	17 300				
233 98 697 504*		17.9	13.0	Flat			1.0 - 3.3						

* = without cathoporesis

Code	Kit / code	Code	Code	Code	Code			
233 98 040 714	For screw M4 : 234 89 040 501	236 11 304 020	236 91 304 090	236 15 601 021	M4			
233 98 050 721						236 91 305 085	236 15 601 022	M5
233 98 050 722						236 91 305 086	236 15 601 023	M6
233 98 050 723	For screw M5 : 234 89 050 505	236 11 305 020	236 91 305 090	236 15 601 022	UNF 10-32			
233 98 050 725			236 91 305 085					
233 98 050 727			236 91 305 102					
233 98 050 728			236 91 305 090					
233 98 050 732			236 91 305 105					
233 98 050 733	For screw M6 : 234 89 060 504	236 11 306 020	236 91 305 086	236 15 601 022	UNF 10-32			
233 98 060 733			236 91 306 109					
233 98 060 734			236 91 306 110					
233 98 060 735			236 91 306 111					
233 98 060 745			236 91 306 146					
233 98 060 746	236 91 306 147	236 91 305 085	236 91 305 090					
233 98 060 747	236 91 306 148							
233 98 697 503	For screw UNF 10-32 : 234 89 697 501	236 11 369 720	236 91 305 085	236 15 601 022	UNF 10-32			
233 98 697 504	For screw UNF 10-32 : 234 89 697 502							



Böllhoff International with companies in :

Argentina
Austria
Brazil
Canada
China
Czech Republic
France
Germany
Hungary
India
Italy
Japan
Mexico
Poland
Roumania
Russia
Slovakia
Turkey
United Kingdom
USA

Apart from these 21 countries, Böllhoff supports its international customers in other important industrial markets in close partnership with agents and dealers

Subject to technical change.
Reprinting, even in extract from, only permitted with express consent.
Observe protective note according to DIN 34.

Böllhoff Group
Please find your local contact on www.boellhoff.com
or contact us under fasteningtechnology@boellhoff.com

